



Connection and branch box

with clamps and non-labelled

The connection and branch box combines the advantages of a traditional box with the well-known professional cast resin technology. Complex connections in a very small volume can be done with this universal box. The system guarantees an absolute waterproof protection, excluding all condensation risks.

Characteristics

- OBO BETTERMANN Kabelabzweigkasten T40 mit der Einsteckdichtung
- Practical connection and branch box with 7 x M20 membran entries
- Schutzart: IP68 mit Gießharz
- Schutzart: IP68 mit Gießharz
- Halogenfrei
- UV-beständige Abzweigdose
- 5-pole clamps for conductor crosssections of 0.5 - 2.5 mm²
- Free hazardous labelling (isocyanate and silicon free)
- Not harmful to the environment
- High flexibility due to removable cast resin
- Translucent before and after curing
- Cable retaining rings for additional stabilisation of the cable
- Withstands long-term exposure to moisture

Application/Suitability

- Outdoor
- Indoor areas (also with high humidity level)
- Underground

Voltage level

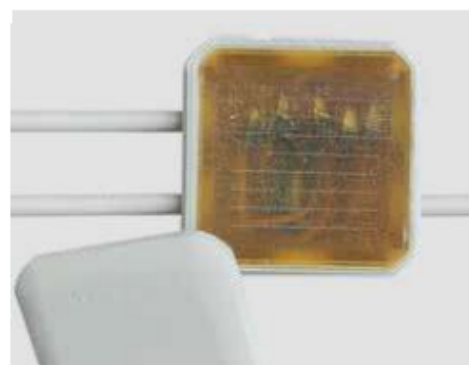
- 230/400 V

Test standards

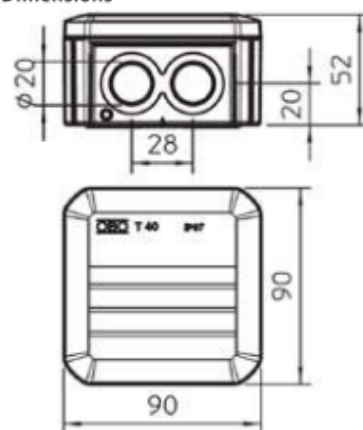
- DIN EN 60529 (VDE 0470)
- DIN EN 50393 (VDE 0278)

Storage conditions/Shelf life

- Cast resin up to 24 months



Dimensions



Scope of delivery

250 ml 2-component hydrocarbon resin CG (containing the correct volume ready for mixing), packed in practical and easy-to-use two-chamber bags, box with membran entries, 5 clamps 5-pole 0.5 - 2.5 mm², 12 cable retaining rings CP-Z1, funnel for easy vertical filling, emery cloth, assembly instructions

Optional accessory: Cleaner UNIVERSAL CLEANER 121 (see Accessories)

Note: Type CG cast resin refills may be ordered separately.

EG

Two-component PUR cast resin

universal

Cast resin EG is suitable for the following types of cables: Low voltage polymeric-insulated and mass-impregnated paper cables up to 1 kV, polymeric-insulated and mass-impregnated paper telecommunication and signal cables and medium voltage cables (as mechanical protection and protection against moisture).

Characteristics

- Two-component PUR cast resin
- In practical and easy-to-use two-chamber bags
- Favourable flow properties
- High hydrolysis resistance
- Resistant to alkaline earth elements
- Stabilized against UV rays
- Halogen-free
- Not harmful to the environment
- Flexibility ensures mechanical stress absorption
- No fracturing under electrical stress
- No fracturing under mechanical tension
- Excellent adhesion to all cable materials
- Low hardening temperature

Test standards

- DIN VDE 0278-631-1

Storage conditions/Shelf life

- In aluminium bag 40 months at ambient temperatures between 15 °C and 35 °C



Scope of delivery

1 PU

Note: Other sizes available on request.

Type	Content ml	Art.-No.
EG	80	134999
	143	124909
	286	124986
	370	124962
	464	124989
	730	124990
	1000	124992
	1150	124901
	1500	124991
	2000	132206

EG Two-component PUR cast resin

Technical data	Value
Flash point of cast resin component (open cup)	> 200 °C
Flash point of reactant (open cup)	> 200 °C
Processing time (pot life) of 300 ml mixture at 5 °C	40 minutes
23 °C	23 minutes
35 °C	15 minutes
max. Reaction temperature	80 °C
Total volume shrinkage during curing	4.0 %
Density	1.10 g/cm ³
Impact strength	> 10 kJ/m ²
Hardness	55 Shore D
Water absorption in warm water (42 d at 50 °C)	350 mg
Electrolytic corrosion	A 1
1 minute test voltage at 23 °C	> 20 kV
80 °C	> 20 kV
Dielectric dissipation factor at 23 °C and 1 kHz	0.05
23 °C and 50 Hz	0.08
Dielectric constant at 23 °C and 1 kHz	5.3
23 °C and 50 Hz	5.1
Tracking resistance	KA 3c
Operating temperature range	-40 °C up to +105 °C