



## Connection and branch box

with clamps and non-labelled

The connection and branch box combines the advantages of a traditional box with the well-known professional cast resin technology. Complex connections in a very small volume can be done with this universal box. The system guarantees an absolute waterproof protection, excluding all condensation risks.

### Characteristics

- OBO BETTERMANN Kabelabzweigkasten T40 mit der Einsteckdichtung
- Practical connection and branch box with 7 x M20 membran entries
- Schutzart: IP68 mit Gießharz
- Schutzart: IP68 mit Gießharz
- Halogenfrei
- UV-beständige Abzweigdose
- 5-pole clamps for conductor crosssections of 0.5 - 2.5 mm<sup>2</sup>
- Free hazardous labelling (isocyanate and silicon free)
- Not harmful to the environment
- High flexibility due to removable cast resin
- Translucent before and after curing
- Cable retaining rings for additional stabilisation of the cable
- Withstands long-term exposure to moisture

### Application/Suitability

- Outdoor
- Indoor areas (also with high humidity level)
- Underground

### Voltage level

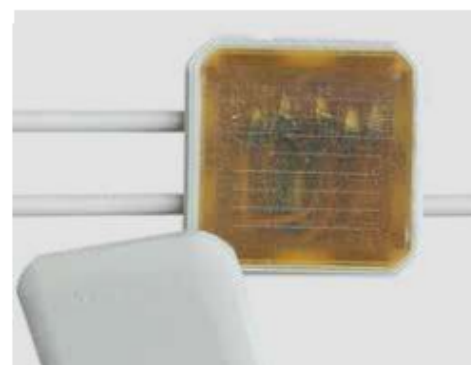
- 230/400 V

### Test standards

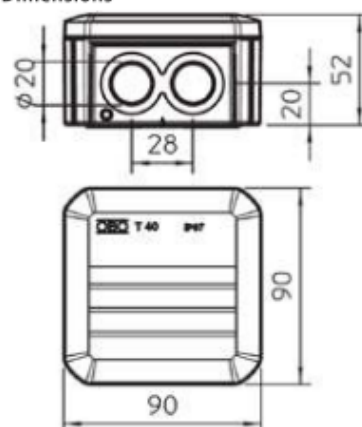
- DIN EN 60529 (VDE 0470)
- DIN EN 50393 (VDE 0278)

### Storage conditions/Shelf life

- Cast resin up to 24 months



### Dimensions



### Scope of delivery

250 ml 2-component hydrocarbon resin CG (containing the correct volume ready for mixing), packed in practical and easy-to-use two-chamber bags, box with membran entries, 5 clamps 5-pole 0.5 - 2.5 mm<sup>2</sup>, 12 cable retaining rings CP-Z1, funnel for easy vertical filling, emery cloth, assembly instructions

Optional accessory: Cleaner UNIVERSAL CLEANER 121 (see Accessories)

Note: Type CG cast resin refills may be ordered separately.

**CG**

## Two-component hydrocarbon resin

Free of hazardous substances, silicone and isocyanate

Cast resin CG is an environment-friendly and removable 2-component cold curing casting compound based on hydrocarbon resins which does not require hazardous label acc. to CLP-Regulation (EC) No. 1272/2008. The translucent cast resin allows a visual inspection even after the casting. The connection is accessible at any time by removing the cast resin. Typical application areas: cable branch-off cabinet, connection boxes, telecommunication cable connections, electronic components.

### Characteristics

- Two-component hydrocarbon cast resin
- In practical and easy-to-use two-chamber bags
- Exceptional electrical insulation
- Free hazardous labelling identification according to the CLP-Regulation (EC) No. 1272/2008
- Free of isocyanate and silicon
- Removable
- Translucent before and after curing
- Favourable flow properties
- Low volume shrinkage
- Cold curing (no heat during reaction)
- Halogen free
- No fracturing under electrical stress
- Excellent adhesion to all cable materials

### Note

- Due to its soft elastic mechanical properties, which are favourable for removal, it is advised to implement a cable relief, if stresses on the cable are likely to occur.

### Test standards

- DIN EN 60455-3-8
- DIN EN 50655-1

### Storage conditions/Shelf life

- In aluminium bag 24 months at ambient temperatures between 15 °C and 30 °C



### Scope of delivery

1 PU

Note: Other sizes available on request.

Type	Content ml	Art.-No.
CG	143	362398
	250	362399
	730	362410
	1000	363564
	2000	362411

Technical data*	Value	Test standard
Processing time (pot life) 300 ml mixture at		
5 °C	24 minutes	DIN EN 60455-2
23 °C	21 minutes	
40 °C	16 minutes	
Hardness (PEN/Hardness)	57 1/10 mm	DIN ISO 2137
Resin - Viscosity at 23°C	2010 mPa x s	EN ISO 2555
Hardener - Viscosity at 23°C	7500 mPa x s	EN ISO 2555
Mix viscosity 5 minutes after mixing at 23°C	4200 mPa x s	EN ISO 2555
Density cured casting compound	0,92 g/cm <sup>3</sup>	EN ISO 1183-1
Resistance to electrical breakdown	> 25 kV/mm	DIN EN 60243-1
Volume resistance at 23°C	> 10 <sup>14</sup> Ωcm	DIN IEC 60093
Storage temperature	0 - 40 °C	DIN EN 60455-2
Operating temperature range	< 80 °C	DIN EN 60455-2

\*The given values are typical values and not a specification