

Technical Trunking for cables  
and Switches & Sockets

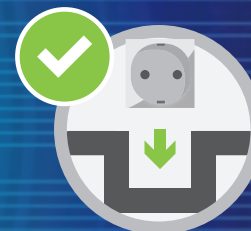
NEW



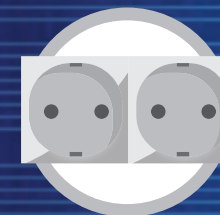
**10054B**

ref.

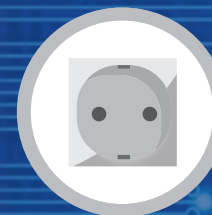
**100x54 - DOUBLE WALL**



Direct click  
install !



45X90



45X45

**IMPROVED DESIGN**  
INTERNAL WALLS REINFORCED

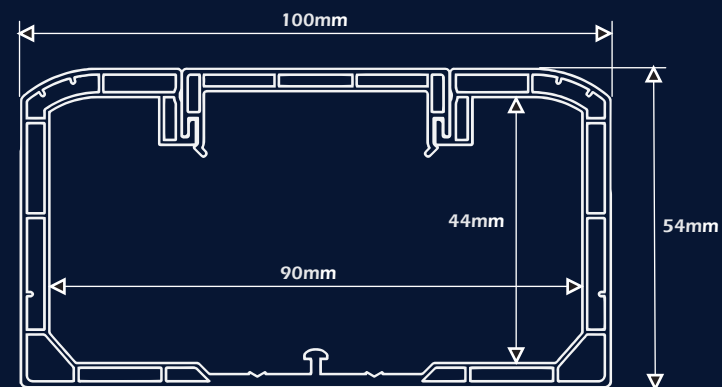
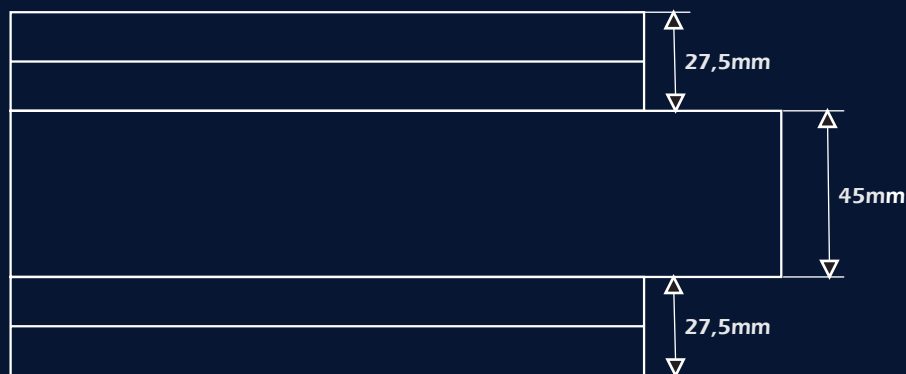


**TO USE WITH:**  
CABLES, SWITCHES  
& SOCKETS

# IMPROVED DESIGN

## INTERNAL WALLS REINFORCED

### TECHNICAL DIMENSIONS



Ref.	Ext. Dim. (mm)	Int. Dim. (mm)	Área (S)mm <sup>2</sup>	WorkÁrea (Su)(S): 1.2(mm) <sup>2</sup>	Máx. Área	Max N° Cables 1,5 mm	Max N° Cables 2,5 mm	Max N° Cables 4 mm	Max N° Cables 6 mm	UTP CAT5e	UTP CAT6e	RG-6
10054B	100x54	2x(37x44)	3250	2100	37	232	146	104	88	62	54	28



Thermoplastic



White - Black



07



41





Compatible with All JSL 45x45 and 45x90 and universal mosaic type sockets

## ADVANTAGES



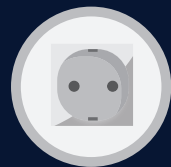
Pressure application



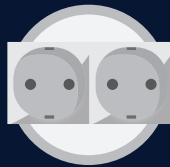
Directly Receives  
Switches & Sockets



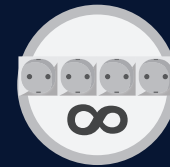
Fixing by screws



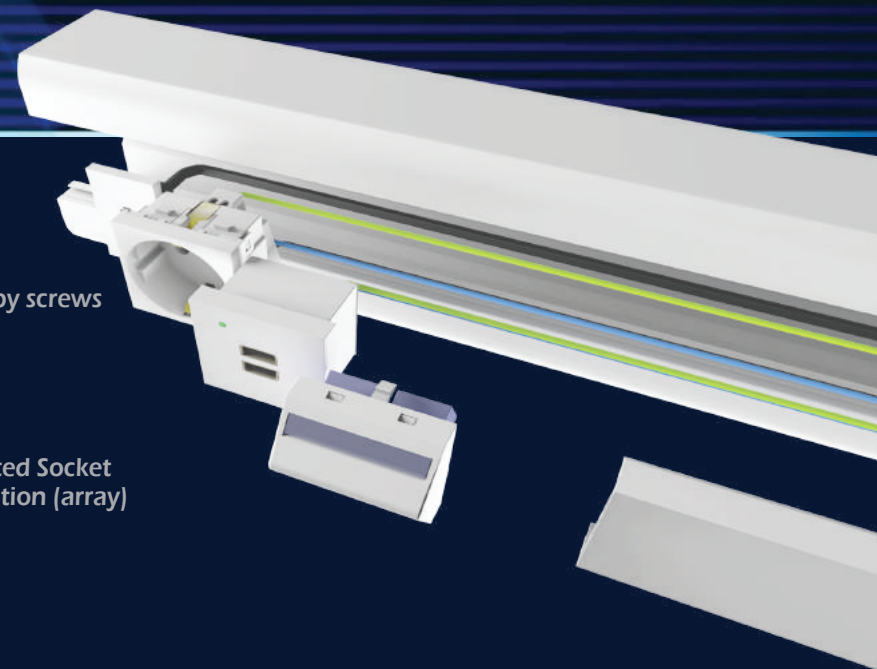
45x45 Type Mosaic



90x45 Type Mosaic



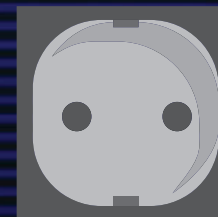
Unlimited Socket  
Installation (array)



SCAN + INFO

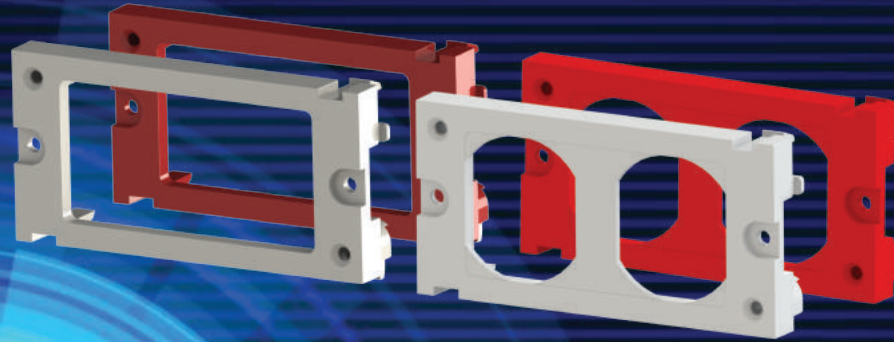


1 CLICK  
DONE!



DIRECT FIT  
WITHOUT  
ACCESSORIES

Accessory for Nema Type Sockets



Fixing with Metal Claws

10054B

ref.

COMPLETE RANGE OF  
FINISHING PIECES

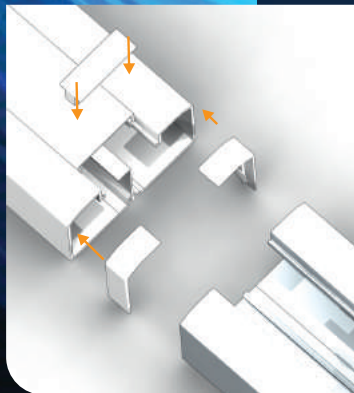


Accessories sold separately

ref. S10040



Spacer

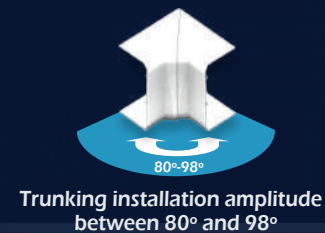


COUPLER

END CAP



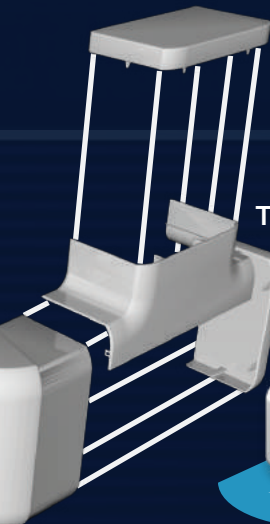
FLAT ANGLE



Trunking installation amplitude  
between 80° and 98°

INTERNAL BEND

TEE



EXTERNAL BEND

Trunking installation amplitude  
between 80° and 120°





Raw material : PVC

Installation type:

Concealed/surface-mounted electrical

installation trunking on walls in both vertical and horizontal positions.

Fixation and installing: Fixation on the substrate with plugs and fasteners

According EN Standards EN 50085-1(2005) e EN 50085-2-1(2007)

Accessories range:

Internal bend 90°, Flatt Bend bend 90°, External bend 90°,

Coupler for Base and Coupler for cover, Tee derivation and End Cap.

Minimum installation and application temperatures -5° C

Minimum storage and transport temperatures: -25°

Maximum application and use temperatures: +60°

Flame retardant (Class M0)

Protection against ingress of water and solid foreign bodies : IP40

Electrical installation duct systems for impact energy 02J (IK07)

Opening mode:

Only open the trunking cover of the electrical installation trunking system with tools

Insulation properties, electrical installation trunking system without electrical conductivity

Classification according the use of the trunking: Type 3

Permissible Tension : 515 V

Classification regarding internal separation elements: Electrical installation trunking systems with possible internal protection separation element.

According REACH and RoHs Directives

Compatible with all the appliances series on format 45x45 MOSAIC\* type (from all manufacturers)

